

1 Health & Safety

Getting Started

2 Introduction

3 Controls

4 Starting the Game

5 Main Menu

6 Saving and Erasing Data

Creating Your Planet

7 Creating Formees

8 Creating Scenery

Playing on Your Planet

9 Exploring

10 Taking Photos

11 Special Actions

12 Camera

What have you got?

13 Your Collection

Connecting with Others

14 Using StreetPass

15 Formees Together

Support Information

16 How to Contact Us

Thank you for selecting
FREAKYFORMS™ DELUXE: YOUR
CREATIONS, ALIVE! for
Nintendo 3DS™.

This software is designed only for
use with the European/Australian
version of the Nintendo 3DS system.



Please read this manual carefully
before using this software. If the
software is to be used by young
children, the manual should be read
and explained to them by an adult.

Before use, please also read the
Operations Manual for your
Nintendo 3DS system. It contains
important information that will help
you enjoy this software.

Health and Safety Information

IMPORTANT

Important information about your
health and safety is available in the
Health and Safety Information
application on the HOME Menu.

To access this application, touch the
 icon on the HOME Menu, then
touch OPEN and read the contents
of each section carefully. When you
are finished, press  HOME to return
to the HOME Menu.

You should also thoroughly read the
Operations Manual, especially the
Health and Safety Information

section, before using Nintendo 3DS software.

For precautions related to wireless communication and online play, please refer to the Operations Manual, "Health and Safety Information".

Information Sharing Precautions

This software allows you to use StreetPass™ to exchange data with other players. Keep the following in mind regarding the use of wireless communication:

- Using wireless communication may allow many people to see information that you have entered (such as your character names). When entering information, we advise that you do not use any important information that can be used to identify you personally, or any words that may make other people feel uncomfortable.
- Do not engage in harmful, illegal, offensive or otherwise inappropriate activity that might cause problems for other users. In particular, do not post, send or otherwise make available any information or content that threatens, abuses or harasses other persons, infringes on the rights of others (such as copyrights, portrait rights, privacy rights, rights of publicity or trademarks) or that may make

other people feel uncomfortable. In particular, when sending, posting or making available photos, images or videos displaying other people, make sure to obtain their permission beforehand.

Language Selection

The in-game language depends on the one that is set on the system. This title supports five different languages: English, German, French, Spanish and Italian.

If your Nintendo 3DS system language is set to one of these, the same language will be displayed in the software.

If your Nintendo 3DS system is set to another language, the in-game default language will be English. For instructions about how to change the system language, please refer to the System Settings electronic manual.

Please note that the title on the Game Card is in English, as the same label design is used for all European countries.

Age Rating Information

For age rating information for this and other software, please consult the relevant website for the age rating system in your region.

PEGI (Europe):
www.pegi.info

USK (Germany):

www.usk.de

COB (Australia):

www.classification.gov.au

OFLC (New Zealand):

www.censorship.govt.nz

Advisories

When you download or use this software (including any digital content or documentation you download or use in connection with this software) and pay any applicable fees, you are granted a personal, non-exclusive, revocable licence to use this software on your Nintendo 3DS system. Your use of this software is subject to the Nintendo 3DS Service User Agreement and Privacy Policy, which includes the Nintendo 3DS Code of Conduct.

Unauthorized reproduction or distribution is prohibited. Your Nintendo 3DS system and this software are not designed for use with any unauthorised device or any non-licensed accessory. Such use may be illegal, voids any warranty, and is a breach of your obligations under the user agreement.

Furthermore, such use may lead to injury to yourself or others and may cause performance issues and/or damage to your Nintendo 3DS system and related services.

Nintendo (as well as any Nintendo licensee or distributor) is not responsible for any damage or loss caused by the use of such device or non-licensed accessory.

This software, instruction manual and other written materials accompanying the software are protected by domestic and international intellectual property laws. The furnishing of this document does not provide you with any licence or other ownership interest in such materials.

Nintendo respects the intellectual property of others, and we ask Nintendo 3DS software content providers to do the same. In accordance with the Digital Millennium Copyright Act in the US, the Electronic Commerce Directive in the EU, and other applicable laws, we have adopted a policy of removing, in appropriate circumstances and at our sole discretion, any Nintendo 3DS software that appears to infringe anyone else's intellectual property. If you believe your intellectual property rights are being infringed, please visit this website to view the full policy and understand your rights:

ippolicy.nintendo-europe.com

Australia and New Zealand consumers please visit:

© 2011-2012 Nintendo

Trademarks are property of their respective owners. Nintendo 3DS is a trademark of Nintendo. All rights reserved.

"QR Code reader" includes software deliverables of Information System Products Co., Ltd. and Institute of Super Compression Technologies, Inc. QR Code is a registered trademark of DENSO WAVE INCORPORATED in JAPAN and other countries.

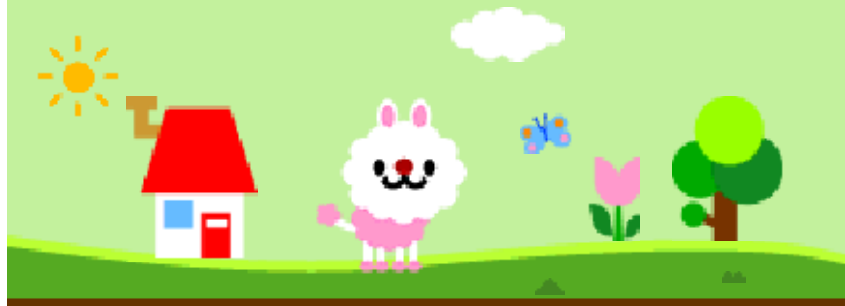
CTR-P-ATQP-EUR

This game lets you create and interact with living things called "formees".













Build them using coloured shapes called "forms", then play with them as you explore your very own planet!

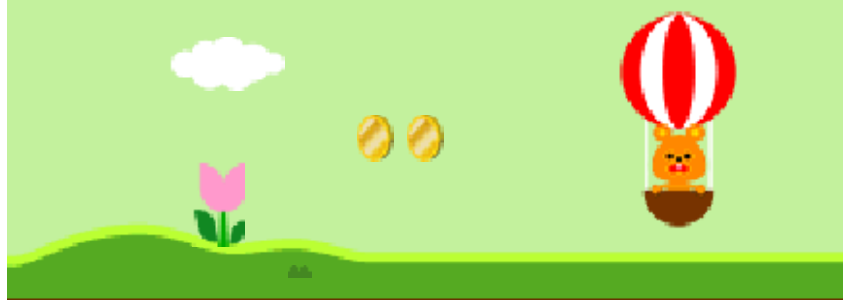
When you create five formees, something will happen. What, you ask? You'll have to play to find out... As you progress through the game, you'll discover new friends, new forms, and new areas to explore.



Most of the controls involve using your stylus to interact with the Touch Screen, but there are a few controls for which you need buttons...

Controls While Exploring

Talk to a formee	Ⓐ/Ⓛ/Ⓡ/Twirl  on the Touch Screen
Open a door	Ⓐ/Ⓛ/Ⓡ/Twirl  on the Touch Screen
Zoom in	
Zoom out	
Open/close map	 / 
Toggle the status screen	 /  (while in dungeons)
Pause/resume game	 / 



Tap the Touch Screen on the title screen to proceed to the main menu.

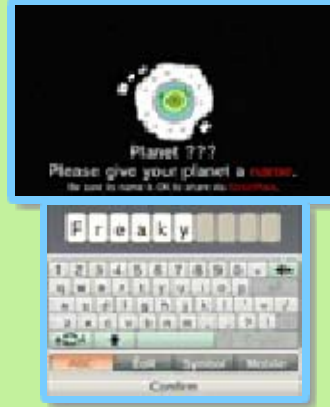


Naming Your Planet



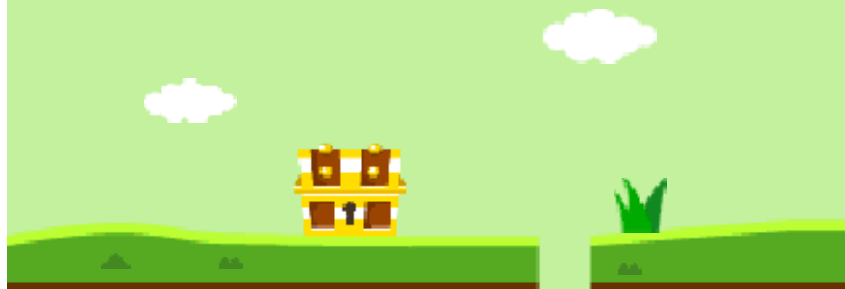
You are asked to name your planet the first time you play.

Once confirmed, the name cannot be changed, so be sure to choose carefully!



If you activate StreetPass, your planet's name will be transmitted to anyone who receives a letter from you, so please do not use personally identifying information or language that others might find offensive in your planet's name.

To protect your privacy, do not give out personal information such as last name, phone number, birth date, age, school, e-mail, or home address when communicating with others.



5 Main Menu

A **!** is displayed over new items when they become available.



1 Create

Here you can create formees and scenery (p. 7-8). You use up a formee heart (♥) when making a formee; if you use one, a new one will appear in about an hour.

If you change the date and time in the System Settings, there is a possibility that formee hearts will not regenerate properly.

2 Play

You can explore with your formee or give them special actions, take 3D photos, take AR Card photos, and exchange QR Code images (p. 9-12).

3 Collection

You can view your FRIENDS, GUESTS, and other items (p. 13).

4 Connect

Choose content to send to other players when StreetPass is activated (p. 14) or create formees with up to

three other friends (p. 15).

5 News

When a newsflash arrives, icons like 🌍 and 🎁 are displayed here.

6 Letter box

You may receive letters if you have activated StreetPass (p. 14).

7 Number of formees

8 Your savings

Use coins to shop in the catalogue, buy special actions or pay for a chance to win bonuses while exploring.





Saving Data



Your game is automatically saved at certain points, such as after creating or confirming edits to a formee or piece of scenery, or when you finish exploring.



Erasing All Data

Select FREAKYFORMS DELUXE: YOUR CREATIONS, ALIVE! from the Nintendo 3DS HOME Menu, and press and hold **(A) + (B) + (X) + (Y)** before the title screen is displayed to erase all data.



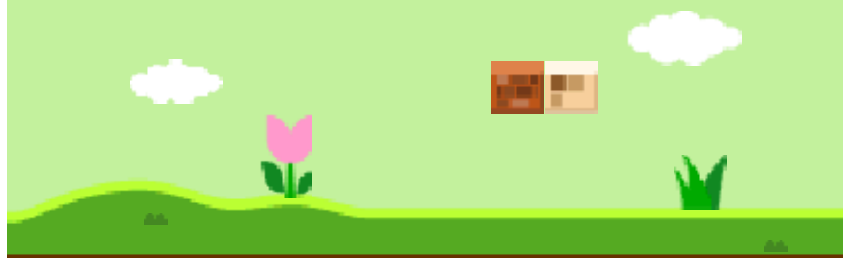
Erasing Specific Data



You may erase a particular formee or guest by finding it in your collection and selecting GOODBYE (p. 13). You can also erase scenery by selecting the item you want to remove in Create Scenery and then selecting ERASE.

Note: Once erased, data cannot be recovered, so please be careful.

- Do not turn the power off and on repeatedly or remove the Game Card or SD Card while saving. Make sure not to reset the system during saves or get dirt in the terminals. These actions could result in permanent data loss.
- Do not use external accessories or software to modify your save data, as this can lead to an inability to progress or loss of save data. Any modification is permanent, so be careful.



The Drawing Board



1 Shop Catalogue

Use the shop catalogue to buy new forms and view your guests, friends, and other formees as you create new ones. Friend formees can be obtained while exploring (p. 9), while guest formees are added via StreetPass (p. 14) or QR Code images (p. 12). Touch BUY after selecting a locked friend to unlock it and obtain its forms.

2 Form categories

3 Colour palette

4 Transformation tools

5 Menu

Hint

Get suggestions for making formees.







Tweak	This option helps you tune a formee by rearranging its forms or changing the colour.
Match	Creates a copy of one of your formees, friends, or guests, which you can then edit to create someone new.
Erase All	This removes all forms from the drawing board.
Tutorial	View any tutorials again.
Undo Last Change	Undo the last action that you did.

How to Create Formees

Drag and drop forms from the categories at the top of the Touch Screen to create a formee's face, body, legs, etc. Gain access to additional forms by purchasing them from the catalogue or discovering them while exploring.

Transforming Forms

When a form is selected, touch

 /  to switch between different options in its category. Touch  to centre on the selected form and automatically zoom to make it fill the screen. You can change the zoom with  and move around your work area with . Touch  to return the view to normal again.

Transformation Tools

Transformation options change depending on the form selected. The transformation tools include the following:



Copy



Flip horizontally



Lengthen/shorten vertically



Widen/narrow horizontally



Enlarge/shrink



Rotate



Bringing a Formee to Life





When you have finished creating a formee, select DONE. A formee heart will make your creation come to life. Then you will be asked to pick a name, favourite phrase, and voice for your creation. Once complete, you and your new formee can go

exploring together. After you make progress through the game, you can also kit your formee out with a special action (p. 11).



1 Select an Area

Touch  or  to select an area.

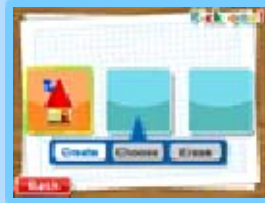
2 Select a Kind of Scenery

The more scenery you find while exploring, the greater your editing options become.

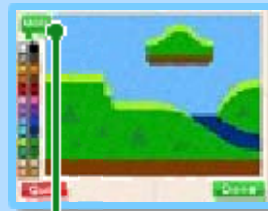


3 Create Scenery

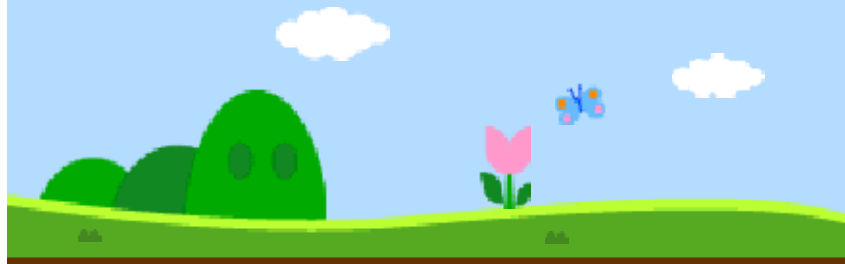
To create new scenery, touch an empty panel and select CREATE.



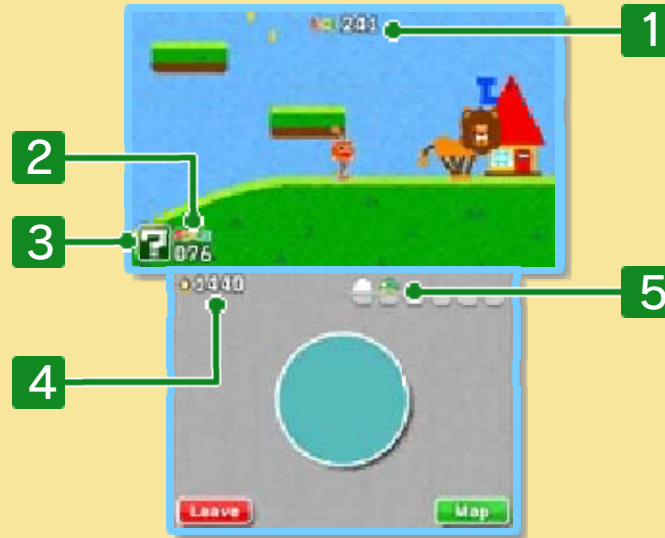
When colouring a landscape, touch MORE to change the contents of the colour palette.



Change palette



Game Screens



1 Remaining time

Your trip ends when the time runs out.

2 Score

Walking, eating food, and doing other things increases your score.

3 Bonus Chance wheel

When your score reaches 100 points, you get a free spin on the Bonus Chance wheel.

4 Total coins collected

5 Eggs collected

Actions

Walking

Touch to the left or the right of the ● to get your formee to walk in that direction.



Jumping

Touch and pull the ● downwards and then release it to make your formee jump.

Eating

Touch and pull the ● to stretch your formee in that direction. Your formee will eat any food that its mouth touches.



Eggs

Your formee sometimes lays an egg after eating food. Touch the egg to put it into your basket.



If you pick up any eggs, you get to play the egg-breaking minigame at the end of your trip.

Poop

Your formee will sometimes poop after it eats. Bump its body into a poop to flush it down the toilet and earn some extra points.

Flying

Formees that have wings can fly through the sky. If you touch the upper half of the Touch Screen while



Meter

exploring with a winged formee, it will take off and fly in that direction, following your stylus. When your exploring formee takes flight, a meter appears on the 3D Screen and starts to decrease. Your formee will fall when it runs out. The meter replenishes when the formee is back on the ground or pops a balloon.

Swimming

When your exploring formee is in water, touch around the ● to swim in that direction. Formees with fins can swim freely through the water for as long as they like. Formees without fins can only swim for a limited amount of time, so be sure to keep an eye on the meter that appears on the 3D Screen and starts to decrease when they're underwater. If it runs out, your formee will start moving very, very slowly. The meter can be replenished by going back to the surface or popping a bubble.

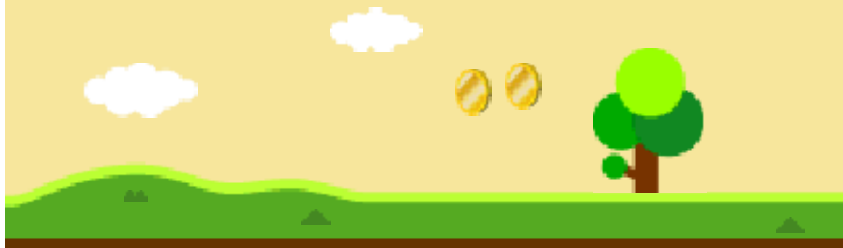
Chests

You can open chests with keys that you find while exploring.



Dungeons

You can play a role-playing game if you enter any dungeons that you find.



10 Taking Photos

You can take a 3D photo of a scene on your planet.

 ① Select a Slot

 ② Select an Area 

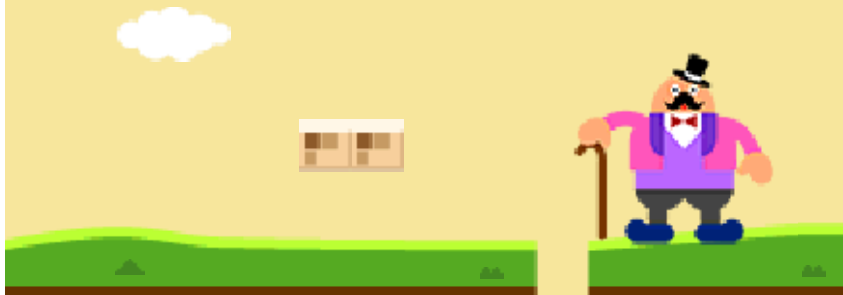
 ③ Decorate the Scene 

 ④ Take a Photo 

Touch TAKE to take a photo.



Photos can be viewed in your photo album (p. 13) and shared via StreetPass (p. 14).



You can equip your formees with special actions after you have made progress in the game.



① Choose a Special Action

The quantity of available special actions is written on the packet.



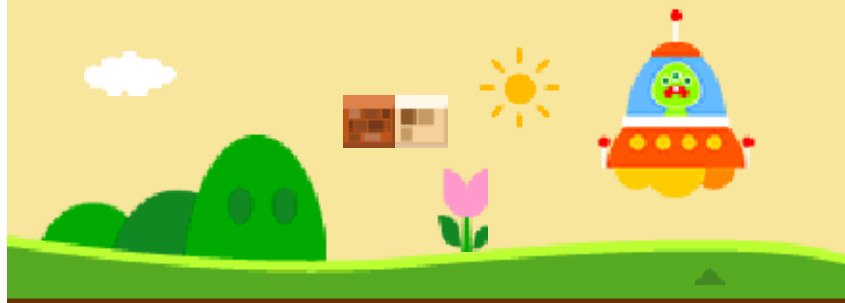
② Choose a Formee



Formees can only have one special action at a time. Select EQUIP to confirm your choice and go exploring.

Out of Special Actions?

You may buy extra copies of special actions that you have already found in dungeons.



Taking AR Card Photos

Use the ? Card that came with your Nintendo 3DS system and your system's outer cameras to take a 3D photo in which a former and scenery objects appear right before you in real life.



Photos taken this way can be viewed using the Nintendo 3DS Camera application on the HOME Menu. For details, please refer to the Nintendo 3DS Camera instruction manual.

The AR Card feature involves moving the Nintendo 3DS system around while you play. Ensure that you have adequate space around you and that you hold the system firmly in both hands while playing. Failing to do so could result in injury and/or damage to surrounding objects.

Reading QR Code Images

Use the Nintendo 3DS system's outer cameras to read a QR Code created in FREAKYFORMS: YOUR CREATIONS, ALIVE! or FREAKYFORMS DELUXE: YOUR CREATIONS, ALIVE!

QR Code images can be generated by the My Formees and Guests albums in your collection (p. 13).

1 Read a QR Code

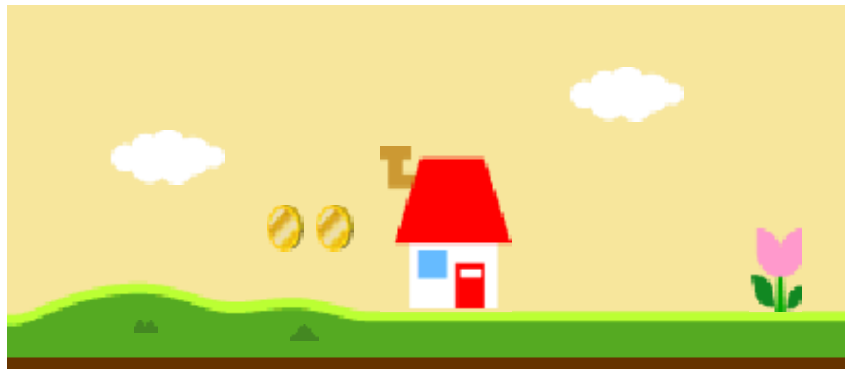
Align your Nintendo 3DS system's outer cameras so that the QR Code fits within the frame displayed on the 3D Screen.

2 Save the Formee

When you successfully read a QR Code, the encoded formee will appear on the 3D Screen. Welcome that formee to your planet as a guest to save it.

Loading QR Code Images

You can load QR Code images that have been saved to the SD Card.



13 Your Collection

There are six categories to choose from that become available as you progress through the game.



My Formees

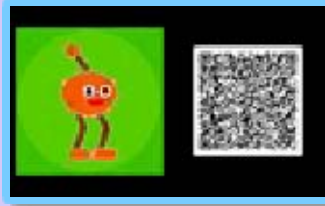
You can view your formees here. Select GOODBYE to erase the formee shown.

You cannot erase formees that are resting in the sanctuary.

Note: Once erased, data cannot be recovered, so please be careful.

Saving a Formee and its QR Code to an SD Card

Select SAVE TO SD CARD to save one of your formees as an image that can be viewed using the



Nintendo 3DS Camera application. (Use the arrows on the Touch Screen to select a background for an image.) To generate a QR Code to accompany an image, make sure the QR Code setting is enabled then select SAVE. When the QR Code setting is on, you will see a QR Code next to the formee on the 3D Screen.

Formee and QR Code images will be saved in the DCIM folder on the SD Card.



Guests



Guests can be saved onto an SD Card in the same way your own formees can be saved. Touch GOODBYE to erase a selected guest. You can have up to 120 guests at a time; if you exceed 120 guests, new guests will replace older ones, starting with the oldest.

Note: Guests you have marked as favourites will not be deleted in this way. You can have a maximum of 60 favourite guests.

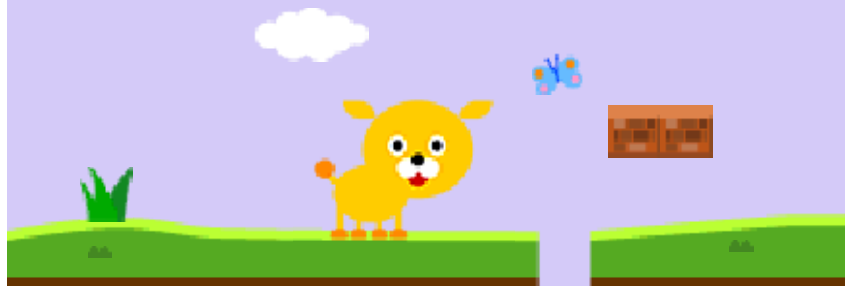


Photos



Photos can be saved onto an SD Card the same way your formees and guests can be saved. Select ERASE to erase a photo. You can have up to 30 photos at a time; if you exceed 30 photos, new photos will replace older ones, starting with the oldest.

Note: Photos you have marked as favourites will not be replaced in this way. You can keep a maximum of 15 favourite photos.





If your Nintendo 3DS system gets close to another Nintendo 3DS system that has this game's StreetPass feature activated, your systems will automatically send and receive content that has been selected to be shared. As each participant elects whether or not to share content, this interaction may not take the form of a direct one-for-one exchange.

This software supports features such as rankings, data swapping, etc. via StreetPass (local wireless communication).

To communicate using this feature, all players must activate StreetPass for this software.

Activating StreetPass

To choose what content to send via StreetPass, select CONNECT from the main menu and then select StreetPass. You can set your formees, guests, and photos to be sent at random, or choose what you want to send. Sending something to another player's world doesn't mean it vanishes from yours. Your formees can visit other planets yet still be on yours, ready to explore whenever you are.



Note: If you send a formee or photo to another planet, please be aware that you cannot delete that content from the receiving player's system or impose limits on how that content is used by the other player.

Note: Please do not share anything that gives away personal information, infringes on others' property rights, includes illegal content, or features content others might find offensive.

Note: Any formees you send could be modified and/or re-distributed by other users.



Deactivating StreetPass

To deactivate StreetPass, open the System Settings and select DATA MANAGEMENT, then StreetPass MANAGEMENT. Touch the icon for this software title, then select DEACTIVATE StreetPass.

Note: You can restrict StreetPass functionality via Parental Controls. For more information, refer to the Operations Manual.

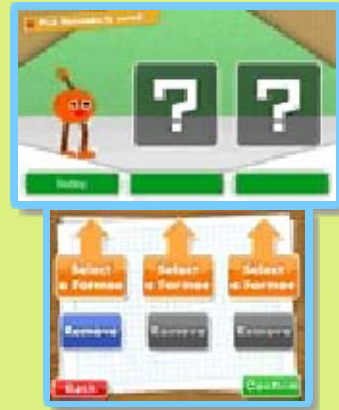
Please be aware that StreetPass content is sent by only one version of either FREAKYFORMS DELUXE: YOUR CREATIONS, ALIVE! or the Nintendo 3DS download software FREAKYFORMS: YOUR CREATIONS, ALIVE! and this is determined by the version of the software which was set up most recently. However, received StreetPass content is only saved to the version of the software used to open it.



My Formees



Use this option to send up to three of your formees to other planets.



Guests

You can choose to send up to three of your guests to other planets.

Photo

You can send one of your photos to other planets.

Your StreetPass Stats

Top 10 Pen Pals

This ranks the planets you've encountered based on the number of letters you've received from them via StreetPass.

Top 10 Travellers

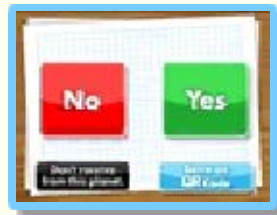
This ranks the formees on your planet based on the number of planets they've visited via StreetPass.

When You Receive a Letter...

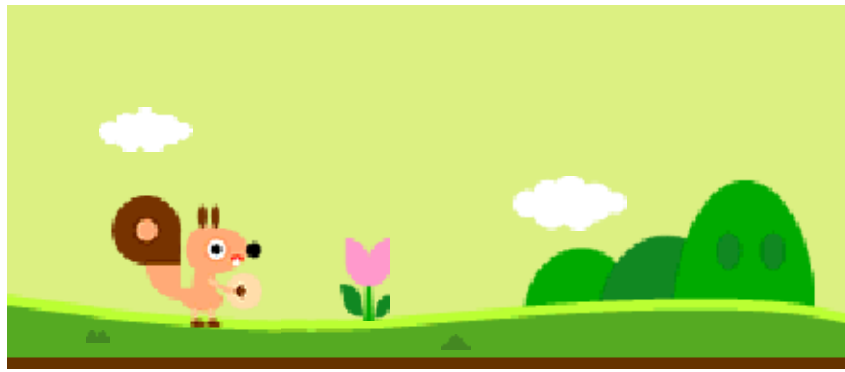
Content sent to you from other planets arrives by letter. The number that appears next to your letter box on the main menu tells you how many new letters you've received. Touch your letter box to see your new letters.



When you open a letter, you must choose whether or not to save its contents. If you choose to keep a letter's contents, that content will appear in the corresponding collection. If you decide you don't want to receive letters from a certain player, you can block future communication by viewing the contents of one of that player's letters and selecting **DON'T RECEIVE FROM THIS PLANET**.



Note: It is possible to unblock a player who has been blocked this way. For details, please refer to the Blocked-User Settings section of the System Settings e-manual.





Formees Together (Download Play)

You can enjoy creating and sharing formees based on your own themes with your friends, even if they don't have their own copy of **FREAKYFORMS DELUXE: YOUR CREATIONS, ALIVE!** Up to four players can participate. One player must have a copy of the software.

Note: Formee themes are only available if sharing images, audio, video and long text data is not restricted by Parental Controls and all players select YES when prompted to allow themes.



You will need:

- One Nintendo 3DS system per player
- At least one copy of the software



Setup

One player acts as the host. The host should select **CONNECT**, **FORMEES TOGETHER**, confirm if themes are allowed, and then **HOST**.

For other players with a copy of the game:

1. Select CONNECT, FORMEES TOGETHER, confirm if themes are allowed, and then SEARCH.
2. Select JOIN and then wait for the host to confirm.

For players without a copy of the game:

1. Select DOWNLOAD PLAY from the HOME Menu.
2. Select Nintendo 3DS.
3. Select FREAKYFORMS DELUXE, then wait for the host to start the download.

The host then chooses which players will join in the session and a player will be chosen to write a message to give the formee creation a theme.

1. The host should select REJECT to exclude players.
2. The host should touch START to begin the session.
3. If themes are allowed, the randomly selected player should write a formee theme and then everybody can get creative!

When all formees are done, players can each choose to save their QR Code images and a photo of all the formees together before starting another session.

Formees and images created in

Formees Together could be modified and/or re-distributed by other users. Please do not include anything in your themes or formees that might make others uncomfortable, gives away personal information or infringes on others' rights.



For product information, please visit the Nintendo website at:

www.nintendo.com/countryselector

For technical support and troubleshooting, please refer to the Operations Manual for your Nintendo 3DS system or visit:

support.nintendo.com